

Model NO : #CDRH6B38 L \*\*\*

**Features**

- \* low profile, high power, low dcr .
- \* compact size with high performance core structure.
- \* green product version.
- \* custom designs available.
- \* closed magnetic circuit construction for high density board assembly .



**Application**

- \* notebook computers.
- \* dc-dc convertors.
- \* dc-ac inverter
- \* vga card.



**Electrical characteristics**

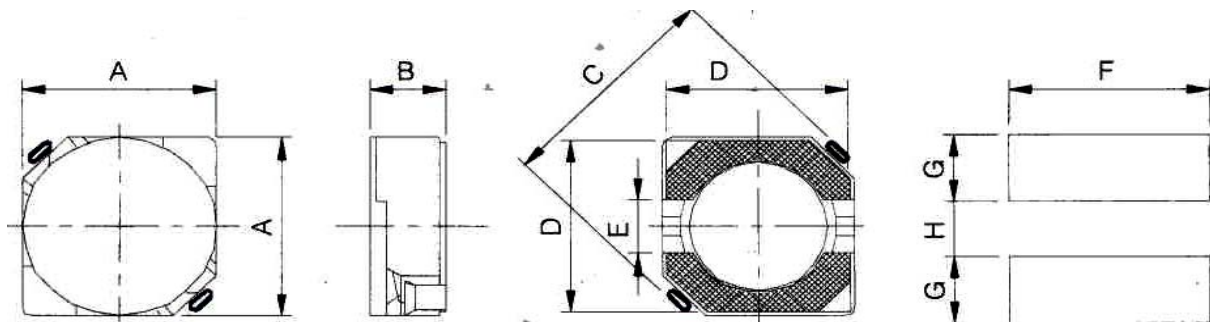
parts No	D.C.R(Ω) MAX	Rated current A×3	parts No	D.C.R(Ω) MAX	Rated current A×3	parts No	D.C.R(Ω) MAX	Rated current A×3
1R0	14m	5.00	180	82m	1.44	151	585m	513m
1R5	17m	4.00	220	94m	1.30	181	660m	486m
2R2	19m	3.60	270	114m	1.20	221	890m	427m
2R7	23m	3.40	330	138m	1.07	271	1.00	387m
4R7	29m	2.88	390	151m	1.00	331	1.25	350m
5R6	33m	2.61	470	169m	950m	391	1.38	318m
6R8	36m	2.39	560	208m	850m	471	2.02	294m
8R2	39m	2.07	680	232m	750m	561	2.20	260m
100	51m	1.94	820	290m	700m	681	2.50	230m
120	57m	1.75	101	325m	630m			
150	70m	1.60	121	434m	605m			

**NOTE :**

- ※1. Measuring Frequency (F) :  $L \leq 8.2\mu H$  100KHZ/0.25V  $L \geq 10\mu H$  1KHZ/0.25V
- ※2. Tolerance of Inductance :  $L \leq 8.2\mu H$  ±30%  $L \geq 10\mu H$  ±20%
- ※3. Rated Current : This indicates the value of current when the inductance is 35% lower than its initial value at D.C.superposition or D.C.current when  $\Delta T=40^\circ C$  whichever is lower .( $T_a=20^\circ C$ )
- ※4. Inductance value . 1R0:1.0(uH) ; 100:10(uH) ; 101:100(uH) ; 102:1000(uH) ;

**Physical dimension : (UNIT:mm)**

TYPE	A(max)	B(max)	C(max)	D	E	F	G	H
#CDRH6B38	7.00	4.00	9.50	6.50	2.00	7.30	2.65	2.00



PCB pattern

Please refer to the sales offices on our website for a representative near you

URL: <http://www.selmag.com.cn>